

Maritime Bottle Filling Station

Consume bunkered/produced water, reduce plastic

Ref. no. 1205-00000

Chilling capacity of 30 liters per hour of 10°C drinking water, based on 26°C inlet water and 32°C ambient, per ASHRAE 18 testing. Features shall include hand-free visual filter monitor, filtered, high efficiency Green Ticker™, laminar flow, antimicrobial, real drain, vandal resistant.

Furnished with vandal resistant StreamSaver™ bubbler. Electronic bottle filler sensor with mechanical front bubbler button activation. Product shall be wall mounted, for indoor applications, serving 1 station(s).

Unit shall be certified to UL399 and CAN / CSA C22.2 no.120. Unit shall be lead-free design which is certified to NSF/ANSI 60 & 372 (lead-free) and meets federal and state low lead requirements.

Special features

Hands-free, visual filter monitor, filtered, high efficiency, Green Ticker™, laminar flow, antimicrobial, real drain, vandal resistant.

Finish	Stainless steel
Power	220V/50 Hz or 60Hz
Bubbler style	Vandal resistant StreamSaver™
Activation	Electronic bottle filler sensor with mechanical front bubbler button
Mounting	Wall mounted
Chilling option*	30 LPH
Full load amps	5.5
Rated Watts	260
Dimensions (L x W x H)	47cm x 47cm x 100cm
Approx. shipping weight	34 kg
Installation location	Indoor
No. of stations served	1

*Based on 26°C inlet water & 32°C ambient air temp for 10°C chilled drinking water.



Why use our bottle filling station

- Efficient and inexpensive
- Constantly cooled water
- Always reliable and safe
- Immediate cost reduction
- Minimise environmental impact

Product compliance

- ADA & ICC A117.1
- CAN/CSA C22.2 No. 120
- GreenSpec®
- NSF/ANSI 42, 53, 61, & 372 (lead free) UL 399



HATENBOERWATER

Fresh in water since 1906.

CLEAN WATER WITHIN REACH

Filter is NSF certified to help put cleaner, healthier water within reach by reducing lead and other contaminants.

HANDS-FREE OPERATION

The touchless, sensor-activated bottle filler is designed for easy use. There's no need to hold the bottle; just place and fill.

REAL DRAIN

The basin includes a real drain system to help with drainage and eliminate standing water.



SEE BOTTLES SAVED

Exclusive Green Ticker™ informs user of the number of 20 oz. plastic water bottles saved from waste by using refillable bottles at the bottle filling station.

ANTIMICROBIAL PROTECTION

Key plastic components on the unit have a special silver ion antimicrobial protection that inhibits the growth of mold and mildew.

MINIMAL SPLASHING

Bottle filler dispenses a clean, laminar flow of water so there is minimal splashing when filling reusable bottles and cups.

Special features

Maintenance

- Mechanically activated bubbler continues to supply water in event of service disruptions.
- Visual filter monitor: LED filter status indicator for when filter change is necessary.
- Standard filter is certified to NSF 42 and 53 for lead, particulate, chlorine taste and odour reduction (3,000 gal. / 10,000 L capacity).
- High performance compressor and insulation greatly reduce energy consumption.

For users

- Green Ticker™: informs users of number of 600 ml / 20 oz. plastic water bottles saved from waste.
- Touchless sensor activation, designed for easy use.
- Laminar flow provides clean fill with minimal splash.

Safety

- Real drain system eliminates standing water.
- StreamSaver bubblers feature chrome plated integral hood guard to prevent contamination from other users, airborne deposits and tampering and to reduce water usage.
- Silver Ion Antimicrobial protection on key plastic components to inhibit the growth of mold and mildew.

Cooling system

- Compressor: hermetically sealed, reciprocating type, single phase. Sealed in lifetime lubrication.
- Condenser: fan cooled, copper tube with aluminum fins. Fan motor is permanently lubricated.
- Cooling unitw: combination tube tank type. Continuous coppertubing with is fully insulated with EPS foam that meets UL requirements for self extinguishing material.
- Refrigerant control: refrigerant HFC134a is controlled by accurately calibrated capillary tube for positively trouble free operation.
- Temperature control: Easily accessible enclosed adjustable thermostat is factory preset. Requires no adjustment other than for altitude requirements.

Maritime Bottle Filling Station

Consume bunkered/produced water, reduce plastic

Ref. no. 1205-00000

NOTICE

This water cooler must be connected to the water supply using a dielectric coupling. The cooler is furnished with a non-metallic strainer which meets this requirement. The drain trap which is provided by the installer should also be plastic to completely isolate the cooler from the building plumbing system.

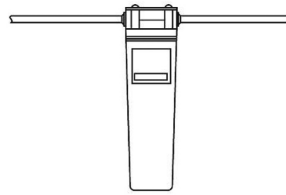
IMPORTANT! INSTALLER PLEASE NOTE:

These units are designed and built to provide water to the user which has not been altered by materials in the cooler waterway. The grounding of electrical equipment such as telephone, computers, etc. to water lines is a common procedure. This grounding may be in the building but may also occur away from the building. This grounding can cause electrical feedback into a water cooler creating an electrolysis which results in a metallic taste or an increase in the metal content of the water. This condition is avoidable by installing the cooler using the proper materials as shown.

Bottle Filler unit will mount on bracket attached to wall by 6 holes (as shown).

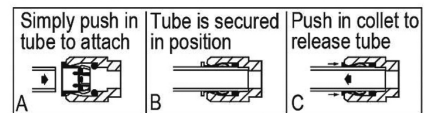
Water and electrical will connect through pre-punched hole in basin.

These products are designed to operate on 20 psi to 105 psi supply line pressure.

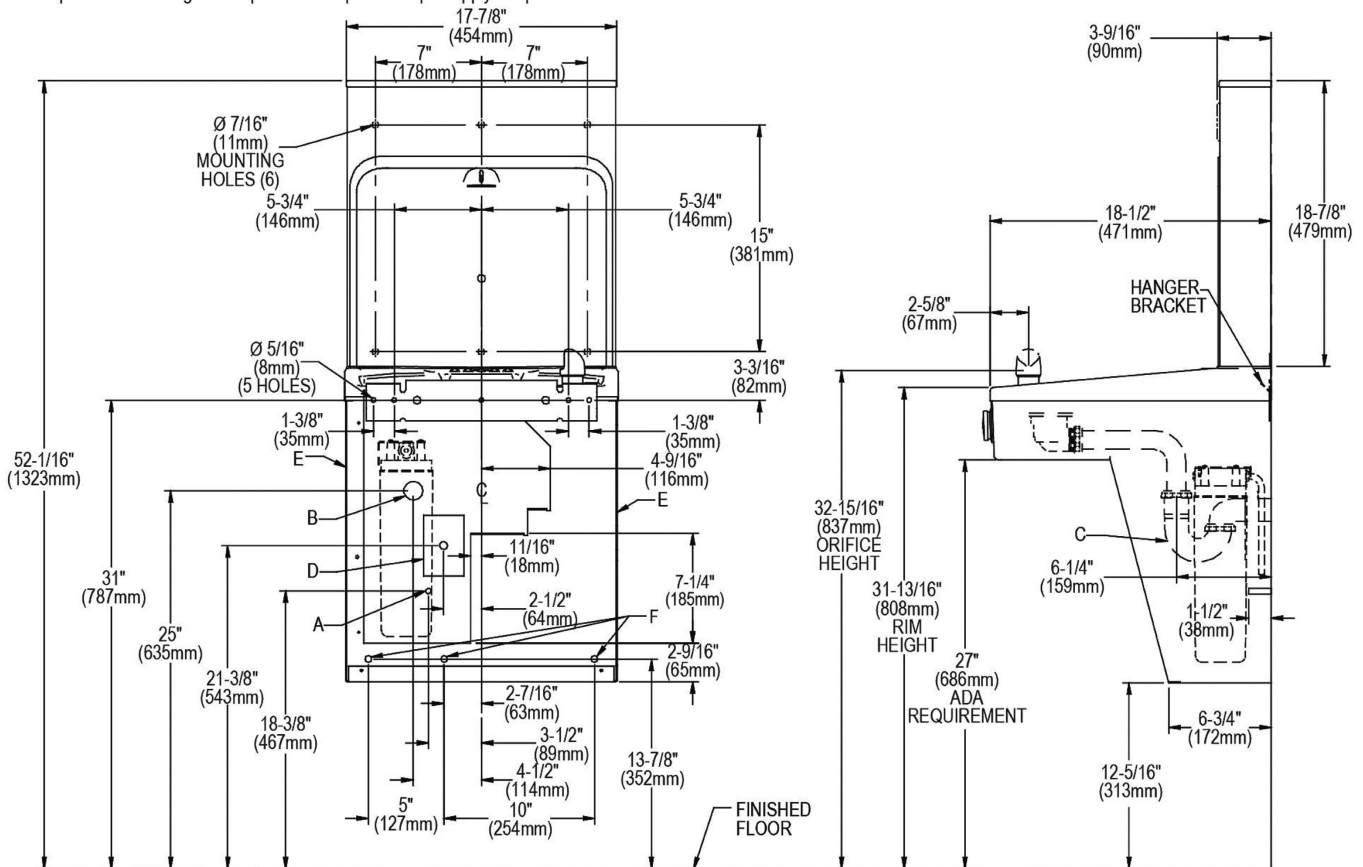


WaterSentry® Plus Filter System

OPERATION OF QUICK CONNECT FITTINGS



Pushing tube in before pulling it out helps to release tube



LEGEND:

REDUCE HEIGHT BY 3 INCHES FOR INSTALLATION OF CHILDRENS ADA COOLER

A = Recommended Water Supply location. Shut-off Valve (not furnished) to accept 3/8" O.D. unplated copper tube. Up to 3" (76mm) maximum out from wall.

B = Recommended Waste Outlet location. To accommodate 1-1/4" nominal drain. Drain stub 2" (51mm) out from wall.

C = 1-1/4" Trap (not furnished).

D = Electrical Supply (3) Wire Recessed Box Duplex Outlet.

E = Insure proper ventilation by maintaining 6" (152mm) minimum clearance from cabinet louvers to wall.

F = 7/16" (11mm) Bolt Holes for fastening to wall.

Note : New Installations Must Use Ground Fault Circuit Interrupter (GFCI). It is highly recommended that the circuit be dedicated and the load protection be sized for 20 amps.

