

## WATERLAB Expert

### Drink water test kit for safe drinking water on board

Art. no.: 0501-000004

The Hatenboer-Water WATERLAB Expert is specifically designed for the maritime market. This advanced testing solution brings features and functionalities to on board water analysis.

With highly accurate readings on 18 parallel wavelengths, multiple connectivity options, powerful software and app, cloud synchronization capabilities, clear test execution animations, and a large HD touch display, the WATERLAB Expert drinking water test kit sets new standards in water testing for maritime applications.

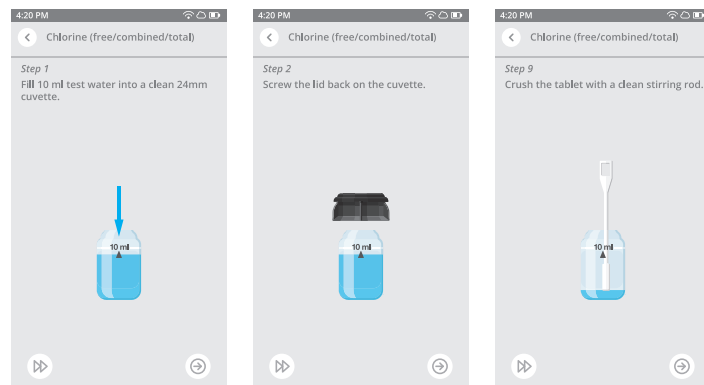
Ensure compliance and gain valuable insights into your water concerns with the selected parameter set of the WATERLAB Expert drinking water test kit. Designed to meet regulations and provide comprehensive analysis, this kit has got you covered.

With this test kit, you can monitor various essential parameters that play a crucial role in maintaining water quality. By measuring parameters like pH, conductivity, LSI index, turbidity and chlorine concentration you'll obtain a deeper understanding of your water.



The measurements executed with the WATERLAB Expert drinking water test kit empowers you to take proactive measures to optimize your fresh water system.

Don't compromise on water quality and regulatory compliance. Invest in the WATERLAB Expert drinking water test kit today and stay ahead of your water management needs.



*Clear instructions.*



#### Parameters

- Hadex 0 - 8 mg/l
- Chlorine 0 - 8 mg/l
- Hardness 0 - 500 mg/l CaCO<sub>3</sub>
- pH 5.0 - 11.0
- Iron 0 - 1 mg/l
- Turbidity 0.0 - 10.0 NTU
- Copper 0 - 5 mg/l
- Color 15 - 500 mg/; (PT-Co)
- Alkalinity 0 - 500 mg/l
- Conductivity 0 - 2000 μS
- Temperature -50°C -300 °C
- LSI / RSI Saturation Index (Corrosion Indicator)
- Hadex / CL dosage recommendation
- Hardness converter

## WATERLAB Expert

Drink water test kit for safe drinking water on board

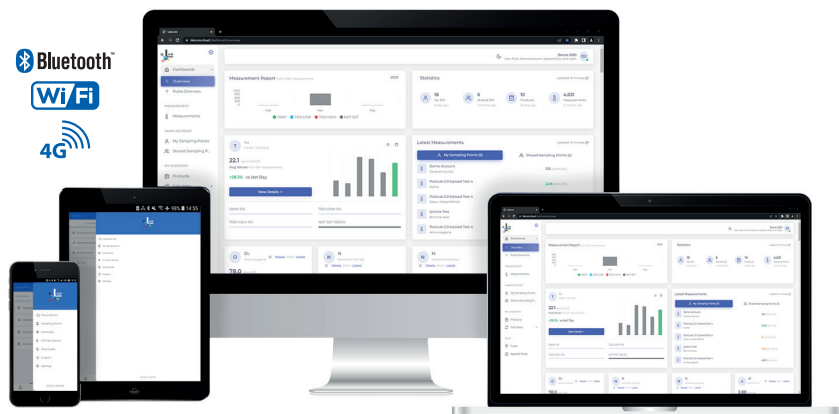
Art. no.: 0501-000004

### Multiple connectivity options

Stay connected with Bluetooth, USB-C, WiFi, and 4G. Wireless transfer data and test results to other devices or share data with colleagues for collaborative analysis.

### Powerful software and app

The software and app allow maritime professionals to efficiently manage, analyze, and interpret test results. Benefit from advanced data visualization, customizable reporting, and automated workflows for enhanced productivity in maritime operations.



### Cloud synchronization

Experience the convenience of synchronizing your data and test results over a cloud-service. Access your analysis from anywhere, anytime, and collaborate effortlessly with team members or shore-based stakeholders.



### Delivery content

- Instruments in carrying case
- Batteries included
- Certificate COC
- Step-by-step instructions with animations
- Consumables

